

Door frame assembly tools



Door frame clamp TU optimized now to insert the door frame more easily

- due to removable clamping bracket with increased clamping surfaces and removable brackets



For sensitive door frames for frame depths of 6 to 13 cm or 13 to 30 cm

- due to cross-shaped pressure plate with interchangeable clamping elements



TU-TRAGE includes 6 door frame clamps in a nylon wheeled case

- for safe and dustfree storage
- for easy transport
- for stowing further products of the BESSEY door frame assembly system



Door frame brace extension TUX for extra-wide doors to be installed

- accessories to increase the opening width of the TU door frame brace



Precision work

- due to telescopic square anodised aluminium tubing with mm scale and adjusting screw

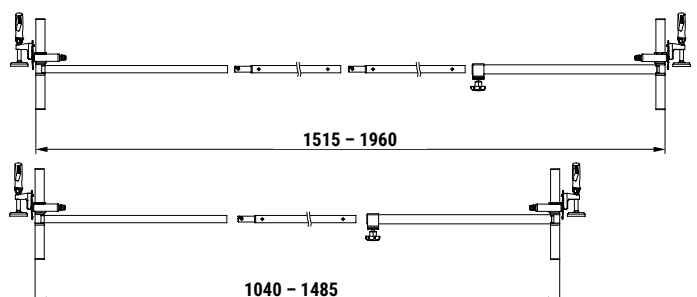


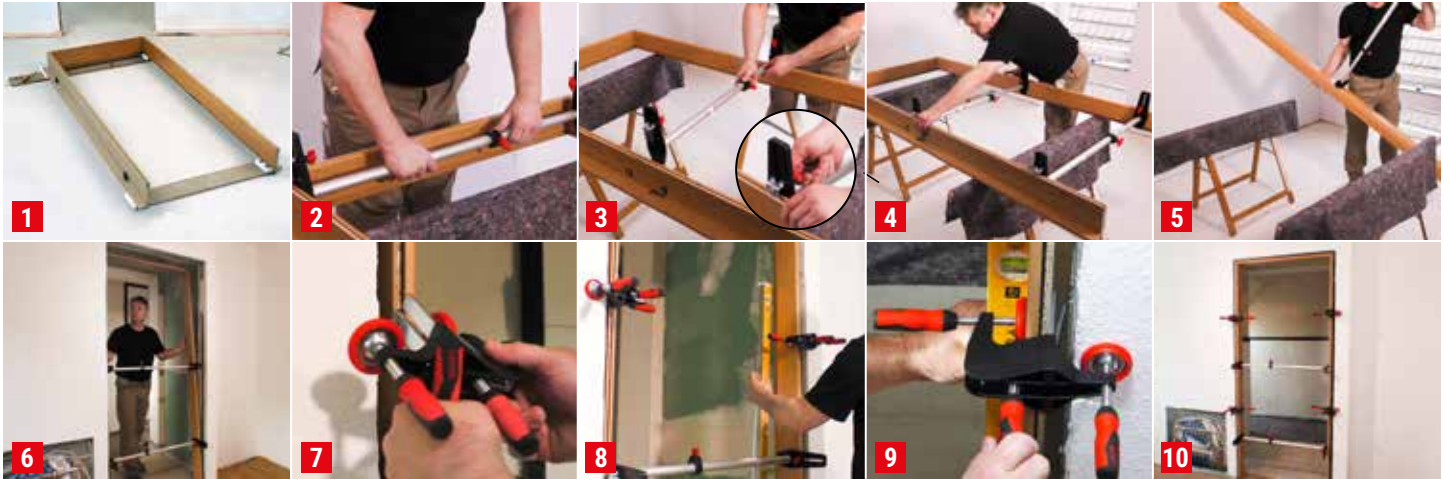
Door frame clamp TU separate and as set

Order number	Contents/pc.	Opening	Weight	PU	V3
		mm	kg	qty.	
TU	1 piece	565-1010	1.27	2	
TU-TRAGE	6 pieces (3 sets) TU in nylon case	565-1010	9.78	1	

Door frame brace extension TUX

Order number	Contents/pc.	Opening	Weight	PU	V3
		mm	kg	qty.	
TUX	2 extension rods	1040-1960	0.37	1	





Door frame assembly device TMS



Order number	Opening	Weight	PU	
	mm		kg	qty.
TMS	560 – 1010	0.68	2	



- “Gently and precisely” braces and supports door casing during foam filling of wall joint
- Telescopic round aluminium tube with adjusting screw for precision work
- With clamping elements on the clamping faces in order to secure struts in frames and to hold them at precise distances

Door frame straightening clamp TFM



Order number	Adjusting range	Throat depth	Weight	PU	
	mm			kg	qty.
TFM-2K	35	70	0.58	2	

- For quick, precise aligning and fixing of door frames
- The intelligent companion for the BESSEY door frame clamp TU and TMS

Angle door frame straightening clamp WTR



Order number	Opening chuck thickness	Adjusting range	Weight	PU	
	mm			kg	qty.
WTR	8 – 30	32	1.05	2	

- For neatly fixed and stabilised frame corners
- For mounting at a precise 90° angle



BESSEY Tool GmbH & Co. KG ■ Mühlwiesenstraße 40
74321 Bietigheim-Bissingen, Germany
Fon +49 7142 401-0 ■ Fax +49 7142 401-452
E-Mail: tool-info@bessey.de

More information
www.bessey.de



Your dealer: