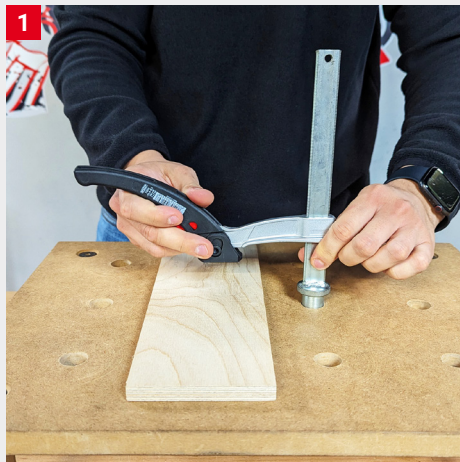


Tips for application: TW20-15-8KLI-SET

Note:

Make sure that the holes used are in good condition and have a continuous hole diameter of 20 mm. If you want to use a self-drilled MDF board as an MFT table, make sure that you have a precise hole (use a guided drill such as a pillar drill). The multifunctional table must also have a panel thickness of at least 19 mm.



- Inserting the bolt into a hole in your multifunction table.



- Press the sliding bracket against the workpiece to be clamped.
- Before clamping, make sure that the clamping lever is fully open.



- Clamp the workpiece: Pull the clamping lever while pressing the sliding arm against the workpiece.

