

# Door frame assembly tools



## Door frame clamp TU optimized now to insert the door frame more easily

- due to removable clamping bracket with increased clamping surfaces and removable brackets



## Precision work

- due to telescopic square anodised aluminium tubing with mm scale and adjusting screw

## Door frame brace extension TUX for extra-wide doors to be installed

- accessories to increase the opening width of the TU door frame brace



## For sensitive door frames for frame depths of 6 to 13 cm or 13 to 30 cm

- due to cross-shaped pressure plate with interchangeable clamping elements



## TU-TRAGE includes 6 door frame clamps in a nylon wheeled case

- for safe and dustfree storage
- for easy transport
- for stowing further products of the BESSEY door frame assembly system

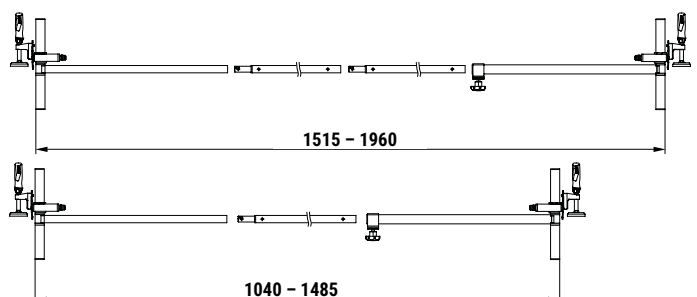


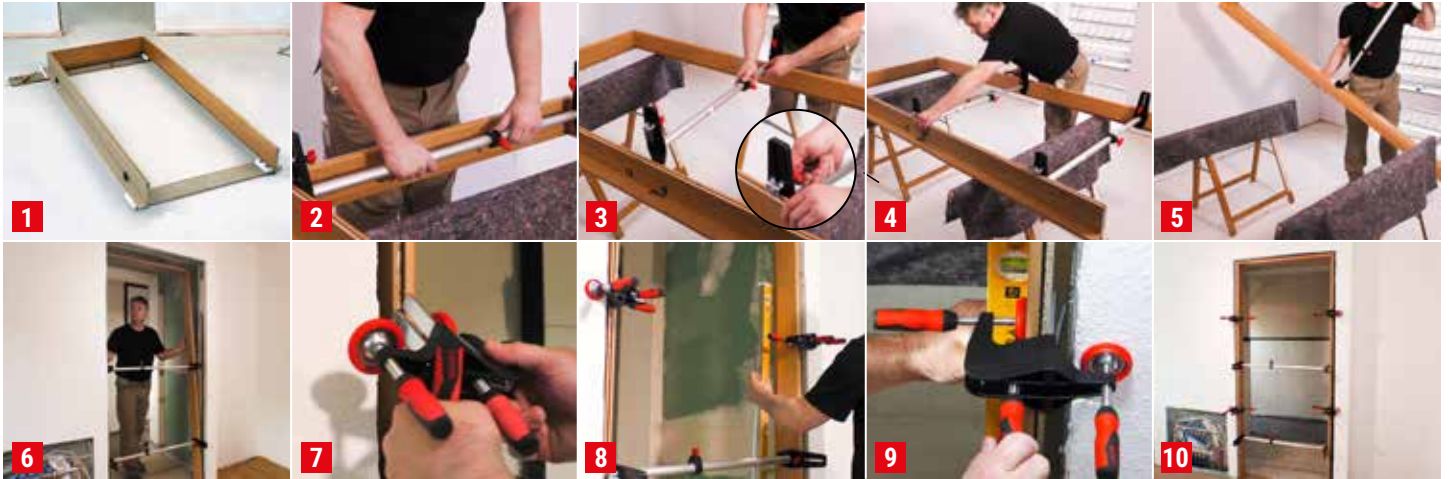
## Door frame clamp TU separate and as set

Order number	Contents/pc.	Opening	Weight	PU	V3
		mm	kg	qty.	
TU	1 piece	565-1010	1.27	2	
TU-TRAGE	6 pieces (3 sets) TU in nylon case	565-1010	10.29	1	

## Door frame brace extension TUX

Order number	Contents/pc.	Opening	Weight	PU	V3
		mm	kg	qty.	
TUX	2 extension rods	1040-1960	0.37	1	





### Door frame assembly device TMS



Order number	Opening	Weight	PU	
	mm	kg	qty.	V3
TMS	560-1010	0.68	2	



- “Gently and precisely” braces and supports door casing during foam filling of wall joint
- Telescopic round aluminium tube with adjusting screw for precision work
- With clamping elements on the clamping faces in order to secure struts in frames and to hold them at precise distances

### Door frame straightening clamp TFM



Order number	Adjusting range	Throat depth	Weight	PU	
	mm	mm	kg	qty.	V3
TFM-2K	35	70	0.58	2	

- For quick, precise aligning and fixing of door frames
- The intelligent companion for the BESSEY door frame clamp TU and TMS

### Angle door frame straightening clamp WTR



Order number	Opening chuck thickness	Adjusting range	Weight	PU	
	mm	mm	kg	qty.	V3
WTR	8-30	32	1.05	2	

- For neatly fixed and stabilised frame corners
- For mounting at a precise 90° angle



BESSEY Tool GmbH & Co. KG ■ Mühlwiesenstraße 40  
74321 Bietigheim-Bissingen, Germany  
Fon +49 7142 401-0 ■ Fax +49 7142 401-452  
E-Mail: tool-info@bessey.de

More information  
www.bessey.de



Your dealer: